

# DEERFIELD ESTATES SECTION TWO

\* On the westerly boundary of these lots is a single family home on 40+ Acres — ↑

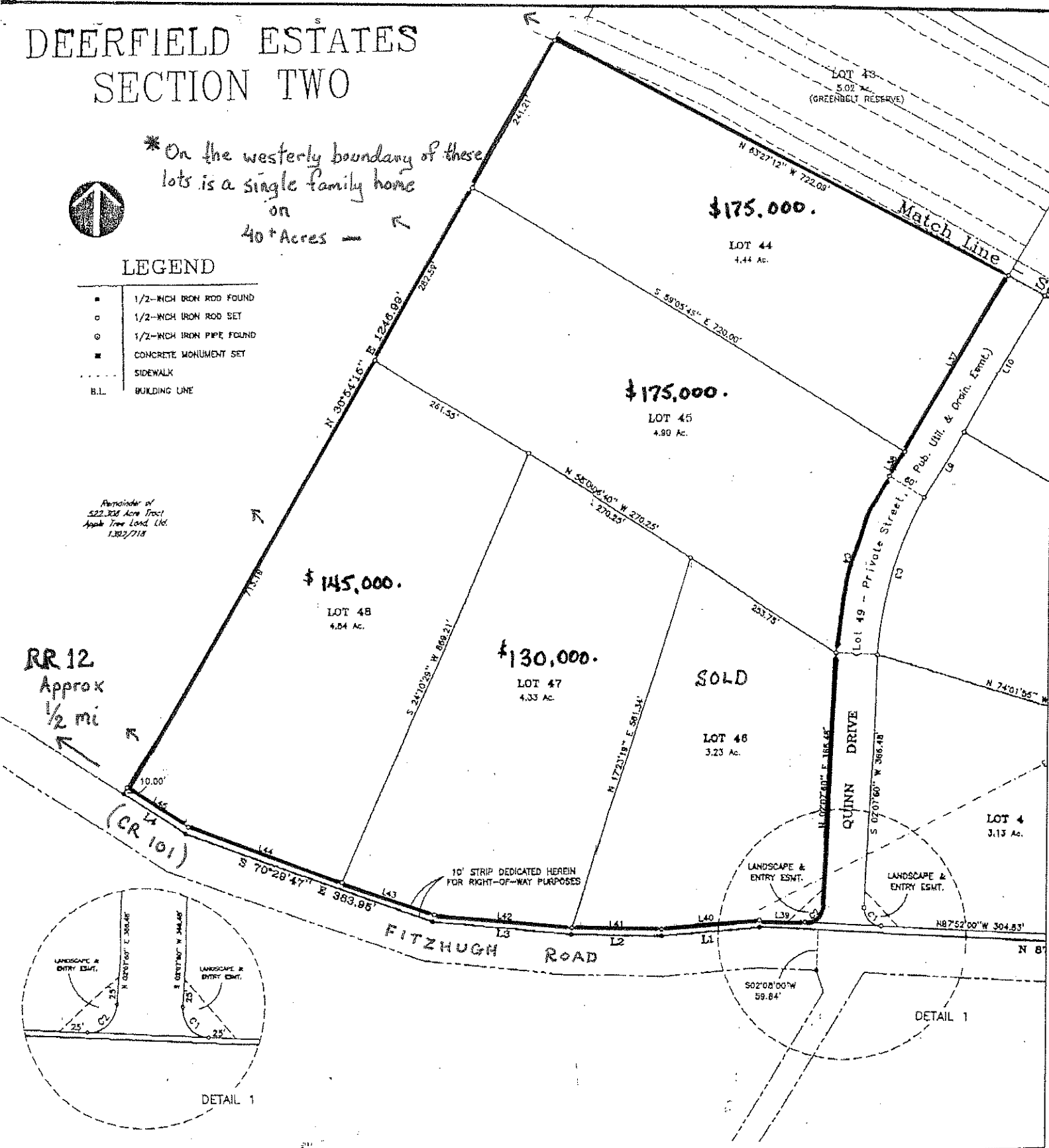
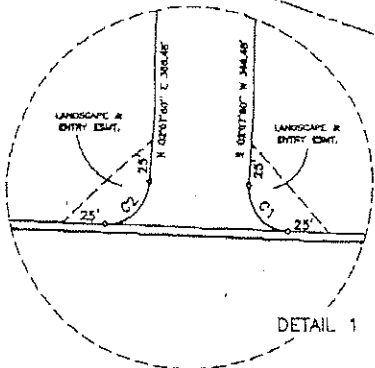


## LEGEND

- 1/2-INCH IRON ROD FOUND
- 1/2-INCH IRON ROD SET
- ⊙ 1/2-INCH IRON PIPE FOUND
- CONCRETE MONUMENT SET
- ..... SIDEWALK
- B.L. BUILDING LINE

Remainder of 522.305 Acre Tract Apple Tree Land, Ltd. 1,302/7118

RR 12  
Approx  
1/2 mi  
↑



Deed Restricted Lots - 2500 s.f. min., 50% masonry unless log home  
 (Brief Summary)

- no resub
- architectural approval required
- horses O.K. (1 per every 2 acres)

Utilities - Underground elec (except Lots 47 & 48)