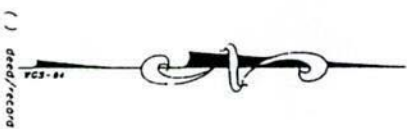
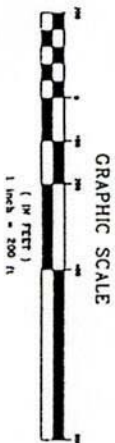


PLAT SHOWING AN 89.31 ACRE TRACT OF LAND OUT OF THE FANNY A. D. DARDEN SURVEY, SITUATED IN HAYS COUNTY, TEXAS.

SEC.	TWP.	R.	ACRES
12	12N	12E	160.00
13	12N	12E	160.00
14	12N	12E	160.00
15	12N	12E	160.00
16	12N	12E	160.00
17	12N	12E	160.00
18	12N	12E	160.00
19	12N	12E	160.00
20	12N	12E	160.00
21	12N	12E	160.00
22	12N	12E	160.00
23	12N	12E	160.00
24	12N	12E	160.00
25	12N	12E	160.00
26	12N	12E	160.00
27	12N	12E	160.00
28	12N	12E	160.00
29	12N	12E	160.00
30	12N	12E	160.00

TRACT	ACRES	RECORD
1	160.00	12-12-12E
2	160.00	12-12-12E
3	160.00	12-12-12E
4	160.00	12-12-12E
5	160.00	12-12-12E
6	160.00	12-12-12E
7	160.00	12-12-12E
8	160.00	12-12-12E
9	160.00	12-12-12E
10	160.00	12-12-12E
11	160.00	12-12-12E
12	160.00	12-12-12E
13	160.00	12-12-12E
14	160.00	12-12-12E
15	160.00	12-12-12E
16	160.00	12-12-12E
17	160.00	12-12-12E
18	160.00	12-12-12E
19	160.00	12-12-12E
20	160.00	12-12-12E
21	160.00	12-12-12E
22	160.00	12-12-12E
23	160.00	12-12-12E
24	160.00	12-12-12E
25	160.00	12-12-12E
26	160.00	12-12-12E
27	160.00	12-12-12E
28	160.00	12-12-12E
29	160.00	12-12-12E
30	160.00	12-12-12E



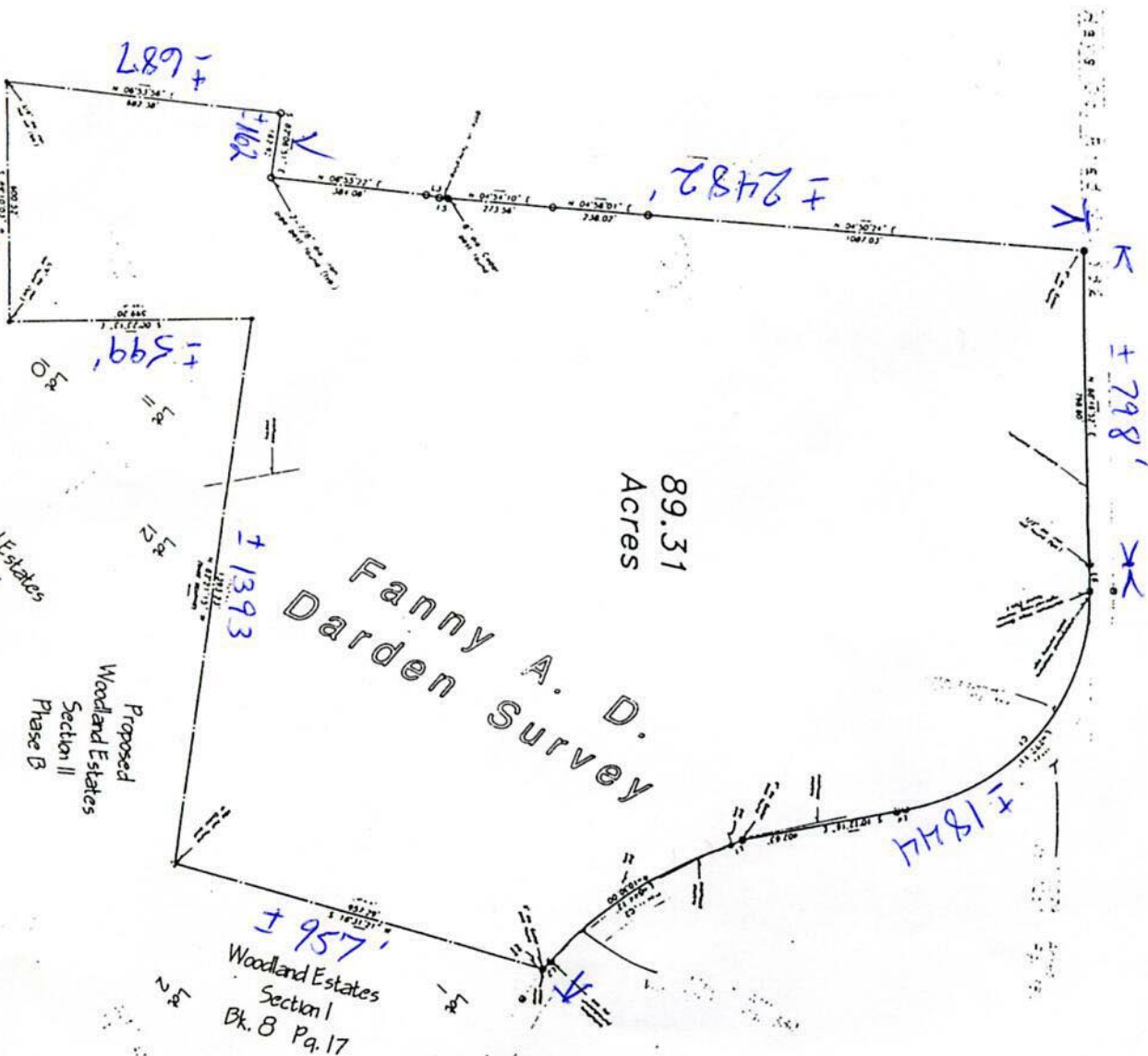
A legal description of some date accommodations this plat  
 This tract is subject to the following statements listed in Faculty National Title Insurance Company's Commitment for Title Insurance, G. F. No. 99-17428  
 - Vol. 234, Page 212 of Hays County Deed Records  
 - AFFRICKS PATENT TRACT - NO EVIDENCE OF LINE ON THIS TRACT.  
 - Water Line Easement granted to Hill Country Water Supply Corporation, recorded in Vol. 940, Page 42 of the Official Public Records of Hays County, Texas.  
 - A.ONG COUNTY ROAD NO. 182 - AFFRICKS TRACT.  
 - Daringe Easement granted to the County of Hays, recorded in Vol. 125, Page 389, of the Official Public Records of Hays County, Texas.  
 - AFFRICKS TRACT - SHOWS HEREON.

This plat and accompanying legal description were prepared from a survey of the ground survey performed under my direction and supervision.

*Don Allen Sulzmeier*  
 Don Allen Sulzmeier  
 Registered Professional Land Surveyor  
 No. 4542 - State of Texas



Nov 15, 1999



SULTZMEIER SURVEYING  
 304 East Main  
 (830) 868-7308  
 Johnson City, Texas  
 78636

DATE	BY	REVISION
11-15-99	DA	1
12-15-99	DA	2